

UNITED STATES PATENT

5,442,771

to **FILEPP ET AL.**
Issued: August 15, 1995

Filed: November 26, 1993

Priority: July 15, 1988

METHOD FOR STORING DATA IN AN INTERACTIVE COMPUTER NETWORK

OVERVIE

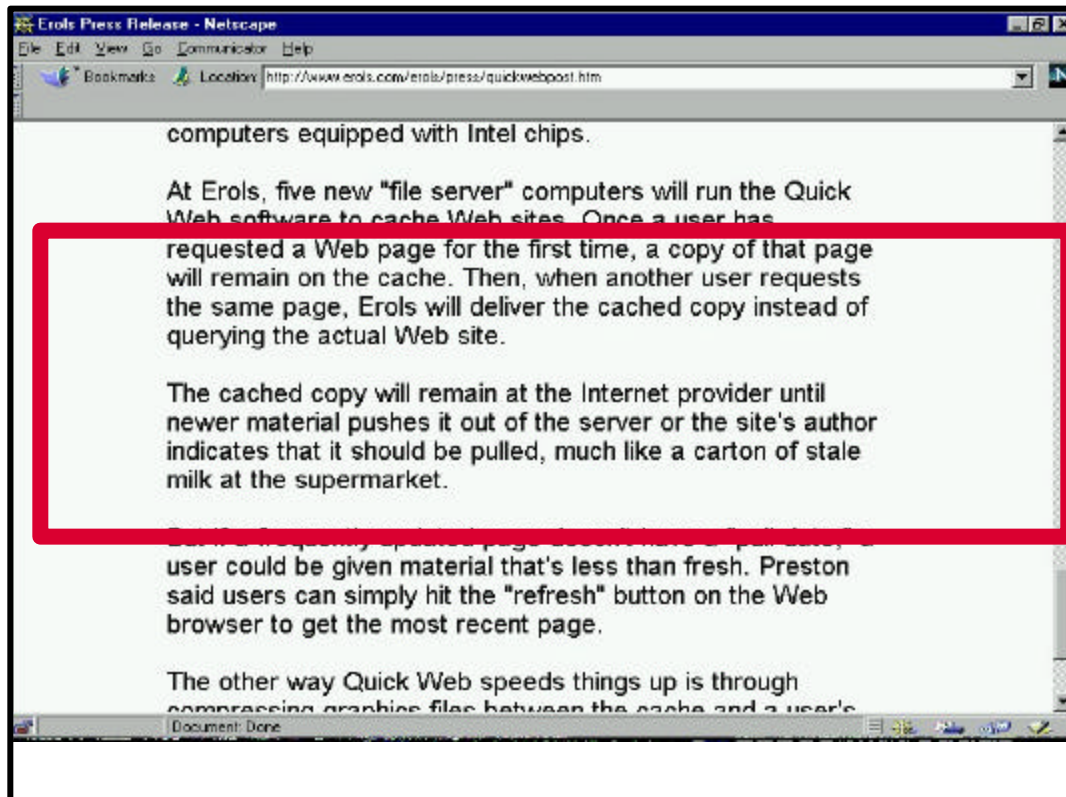
Data stores are created in an on-line computer network. Data in the network is associated with parameters controlling whether and how it may be stored. Storage is accomplished in accordance with the parameters.



Claim:

- 1. Method for storing data in a computer network, the network including a multiplicity of user reception systems at which respective users can request applications during user sessions, the application being generated from the data, the method comprising the steps of:
 - a. establishing data stores within the network from which data may be obtained for generating the applications during data usage sessions;**
 - b. associating storage control parameters with the data to be stored, the control parameters dictating predetermined eligibility of the data for storage at the data stores;**
 - c. supplying data to the respective stores for use in generating applications; and**
 - d. retaining data at the stores based on at least the eligibility for storage dictated by the respective storage control parameters.****

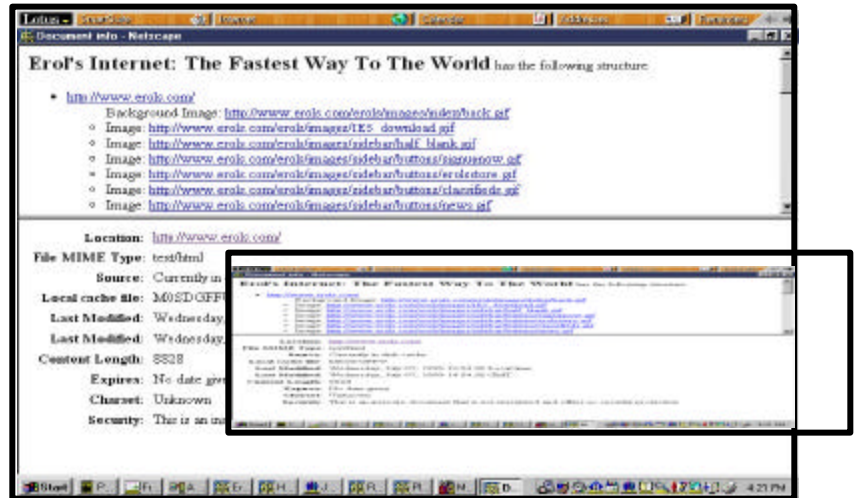
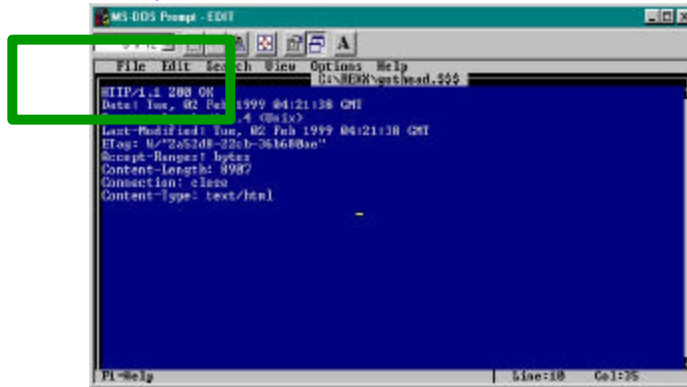
1. Method for storing data in a computer network, the network including a multiplicity of user reception systems at which respective users can request applications during user sessions, the application being generated from the data, the method comprising the steps of:
 - a. **establishing data stores** within the network from which data may be obtained for generating the applications during data usage sessions;



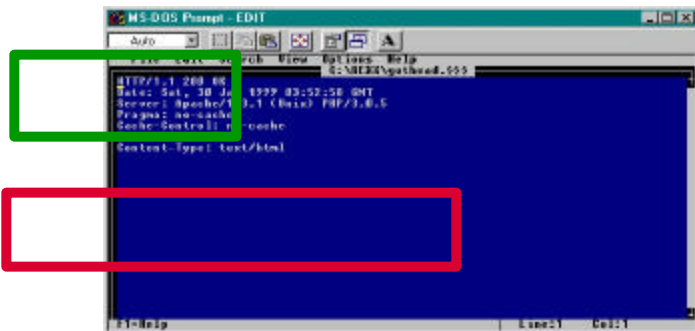
EROLS press release on proxy caching:
www.erols.com/erols/press/quickwebpost.htm

b. associating storage control parameters with the data to be stored, the control parameters dictating predetermined eligibility of the data for storage at the data stores;

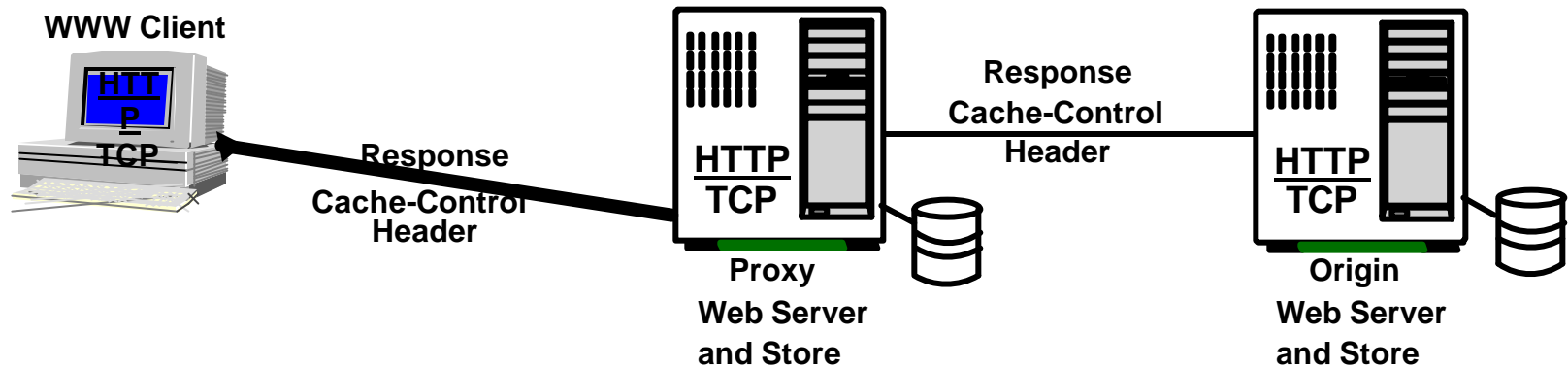
<http://www.erols.com>



<http://www.mail.erols.net/external/aliaschange/index.cgi>



b. **associating storage control parameters** with the data to be stored, the control parameters **dictating predetermined eligibility** of the data for storage at the data stores;

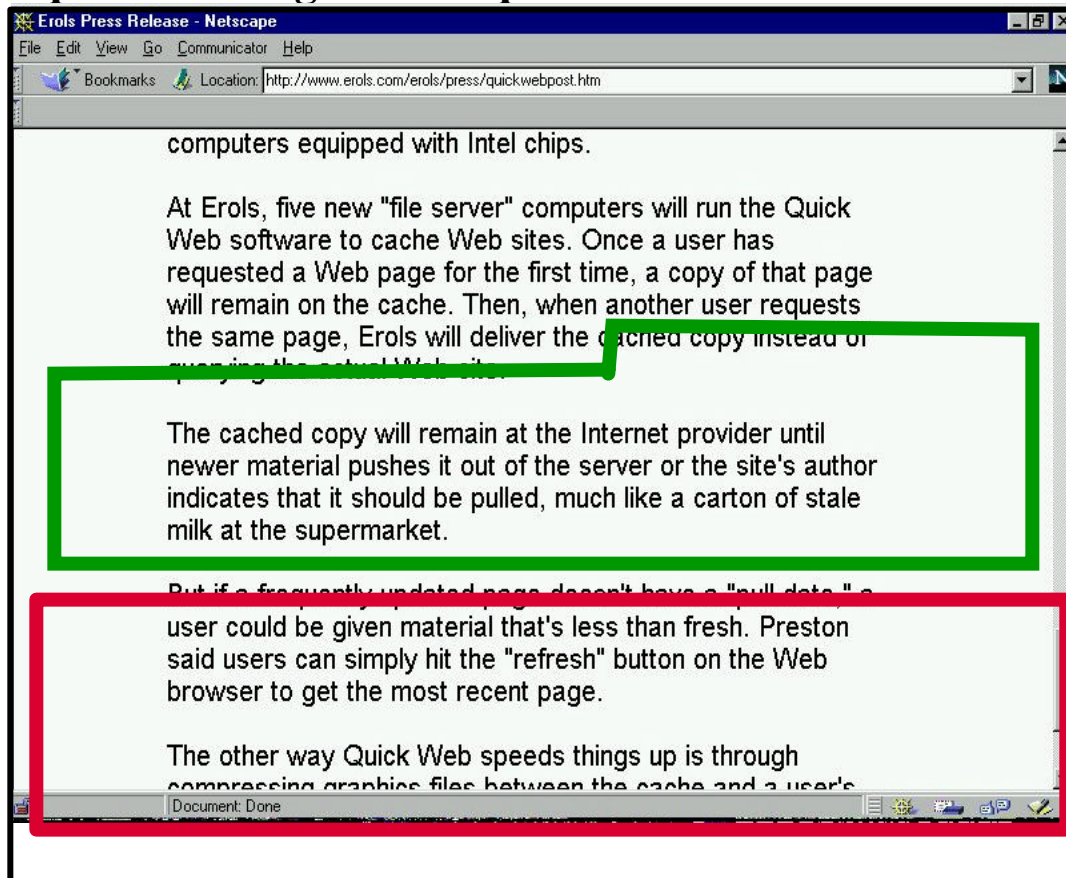


Response Cache- Control Headers in HTTP/1.1

The **response Cache-Control Header** is a signal to intermediate proxies and the client. These **directives** include:

- **Private**
- **Public**
- **No-cache**
- **No-store**
- **No-transform**
- **Must-revalidate**
- **Proxy-revalidate**
- **Max-age**

- c. **supplying data** to the respective stores for use in generating applications;
and
- d. **retaining data at the stores based on at least the eligibility for storage** dictated by the respective storage control parameters.



EROLS press release on proxy caching:
www.erols.com/erols/press/quickwebpost.htm