

UNITED STATES PATENT

5,758,072

to FILEPP ET AL.

Issued: May 26, 1998

Filed: October 23, 1996

Priority: July 15, 1988

INTERACTIVE COMPUTER

NETWORK

AND METHOD OF OPERATION

OVERVIEW

At: ISP host network delivers data files, representing components of a web page application, to be displayed on a client computer. Components, not stored in the client computer are supplied by the network.

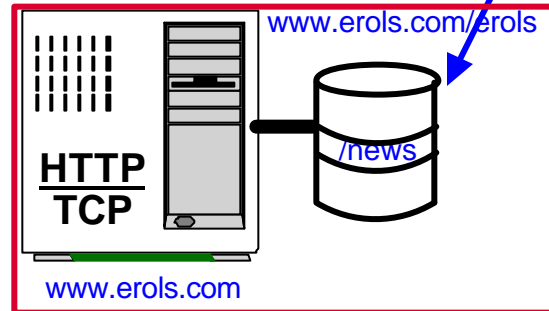
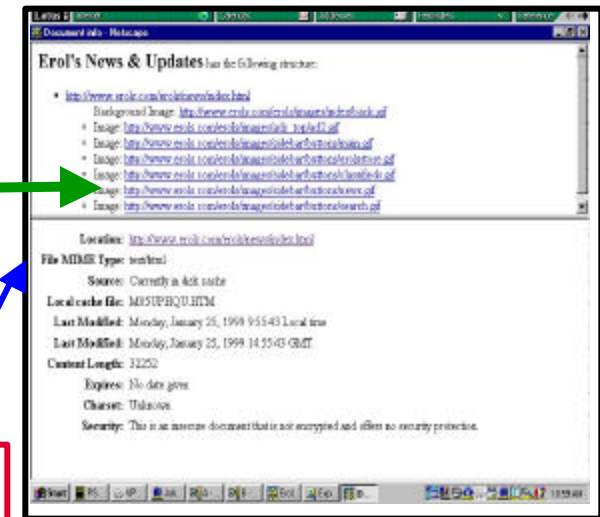
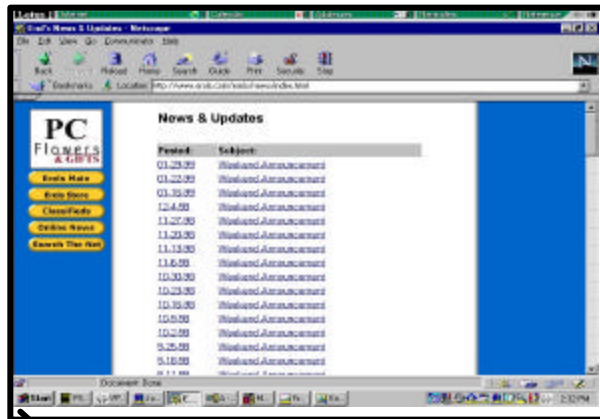
Claim:

- 16. A computer network for providing a multiplicity of users access to a multiplicity of applications the applications each including data, the apparatus comprising:**
- a. one or more host computers, each including a data store containing data used in generating applications, at least some of the data used in generating at least some applications being organized as objects;**
 - b. a plurality of reception system computers at which respective users can request applications, each of the respective reception system computers in communication with a host computer, the reception system computers each including a data store containing data used in generating applications and means for processing objects so that applications may be presented at the respective reception systems;**
 - c. data distribution means for distributing data in the network such that data required for an application requested at a respective reception system can be collected from the data store of the respective reception system and to the extent required data is unavailable at the respective reception system, such that the required data not at the respective reception system can be collected from the network other than the respective reception system so that the requested application can be presented at the respective reception system based on the objects collected.**

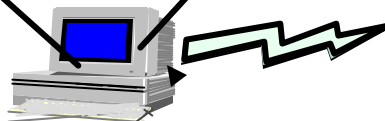
16. A computer network for providing a multiplicity of users access to a multiplicity of applications the applications each including data, the apparatus comprising:

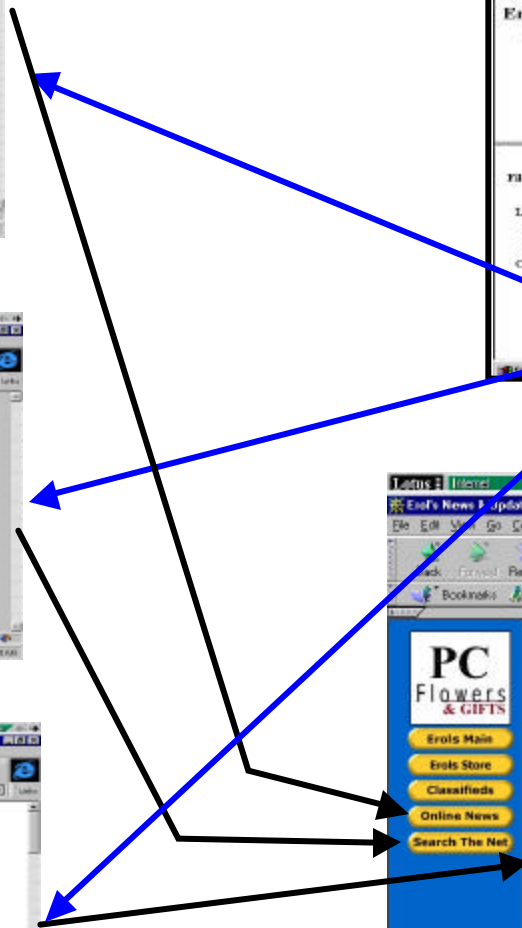
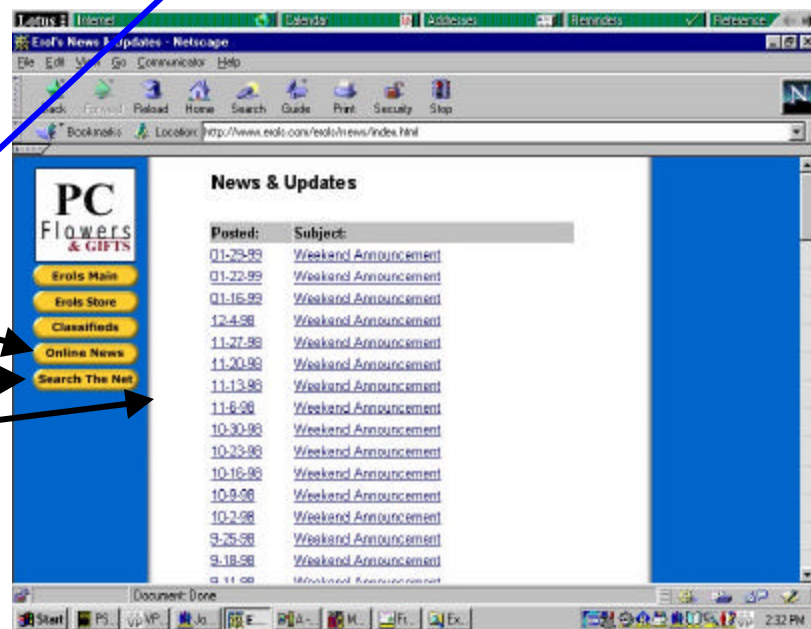
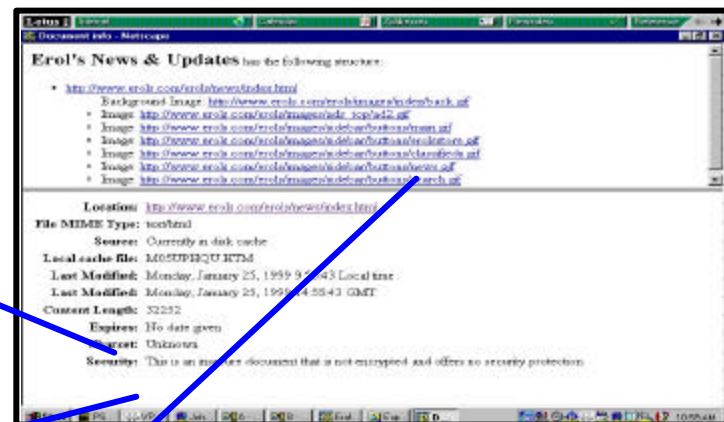
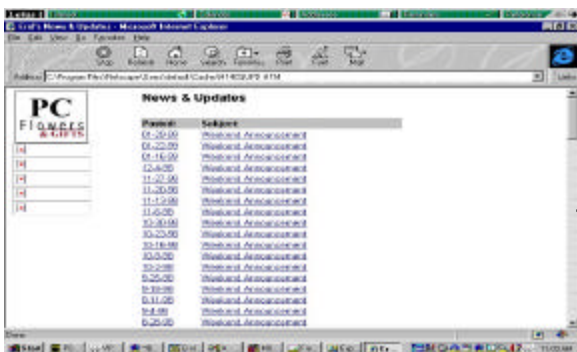
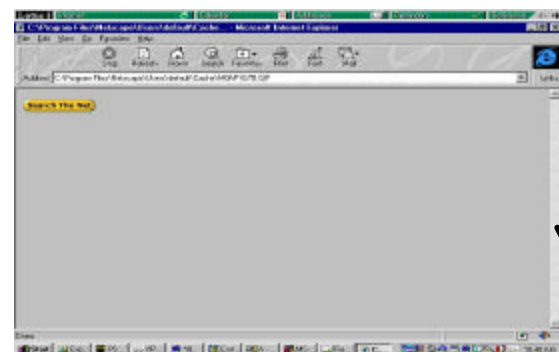
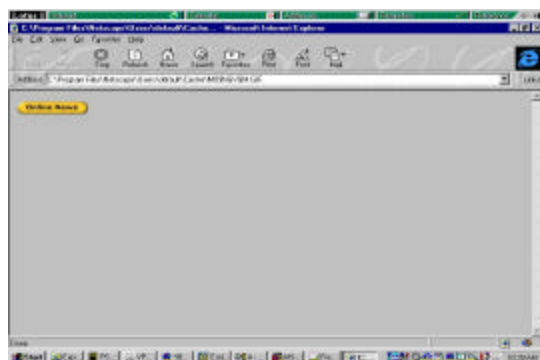
a. one or more **host computers**, each including a **data store** containing data used in generating **applications**, at least some of the data used in generating at least some applications being organized as **objects**;

<http://www.erols.com/erols/news/index.html>

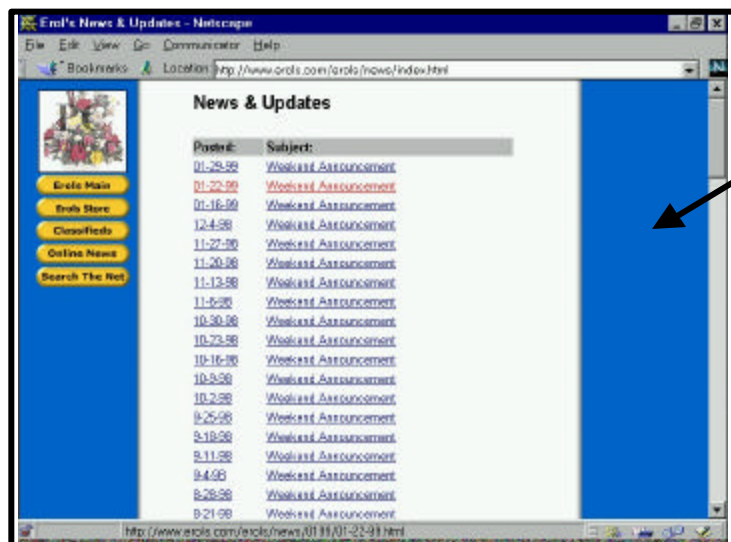


WWW Client

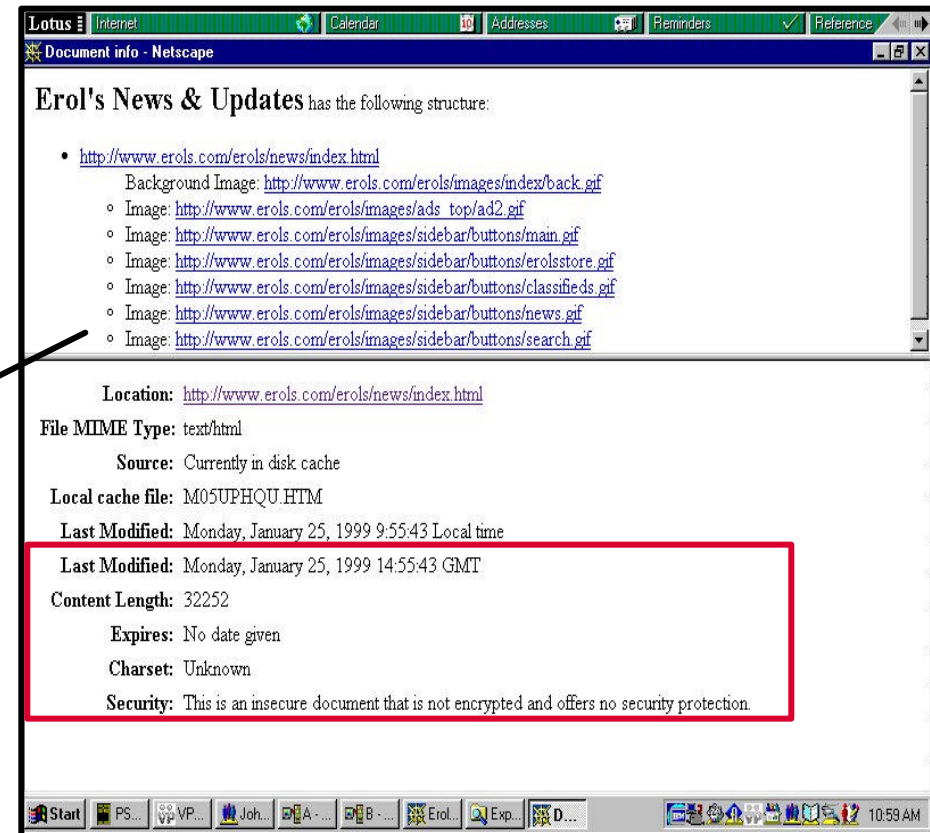




b. a plurality of reception system computers at which respective users can request applications, each of the respective reception system computers **in communication with a host computer**, the reception system computers each including **a data store containing data used in generating applications** and means for processing objects so that applications may be presented at the respective reception systems;

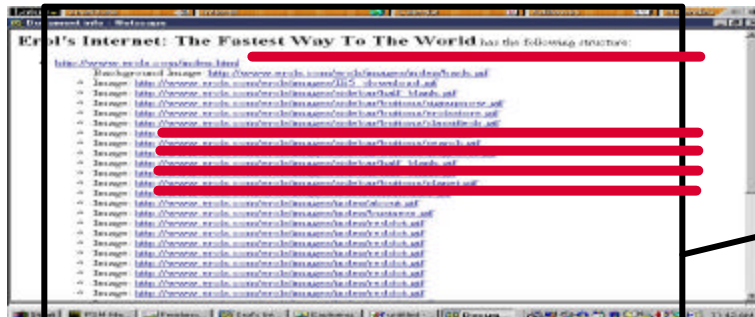


Browser
Program

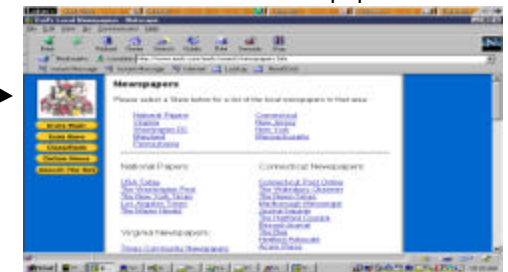
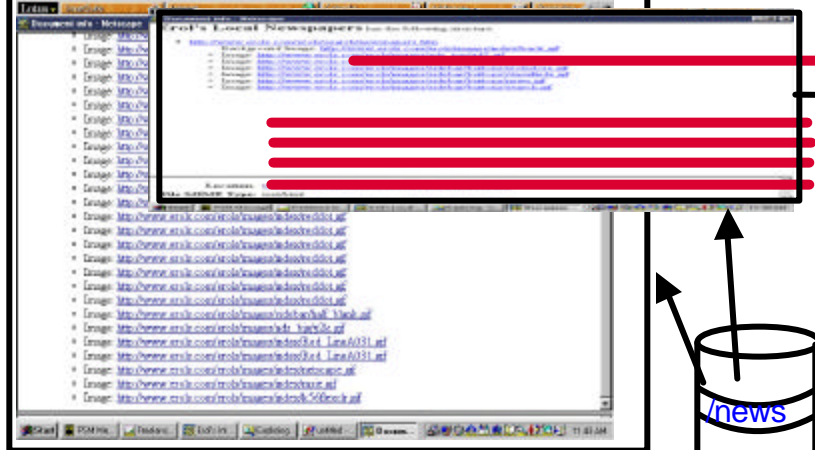


c. **data distribution means** for distributing data in the network such that **data required for an application requested at a respective reception system can be collected from the data store of the respective reception system** and to the extent required data is unavailable at the respective reception system, such that the **required data not at the respective reception system** can be collected from the network other than the respective reception system so that the requested application can be presented at the respective reception system based on the objects collected.

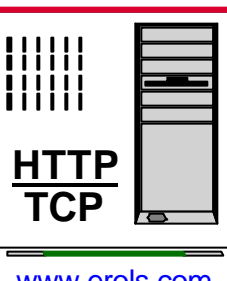
<http://www.erols.com/index.html>



<http://www.erols.com/search/newspapers.html>

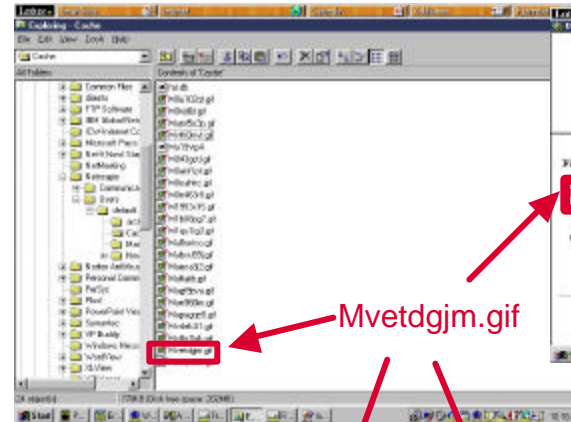
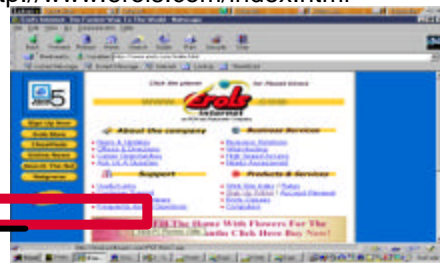


www.erols.com/erols

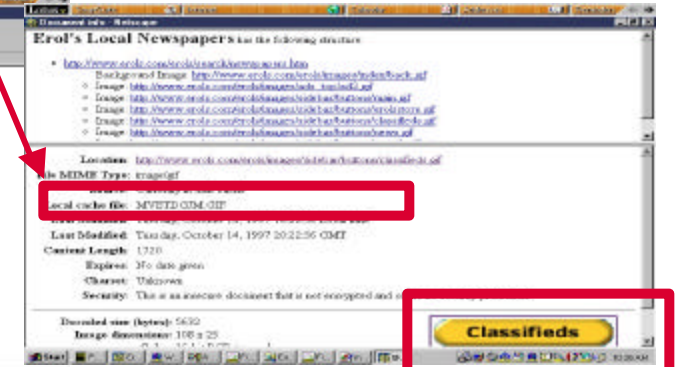
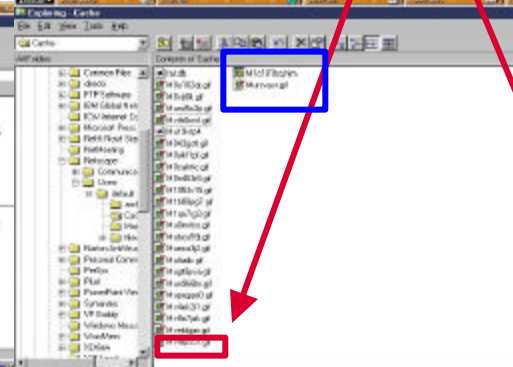
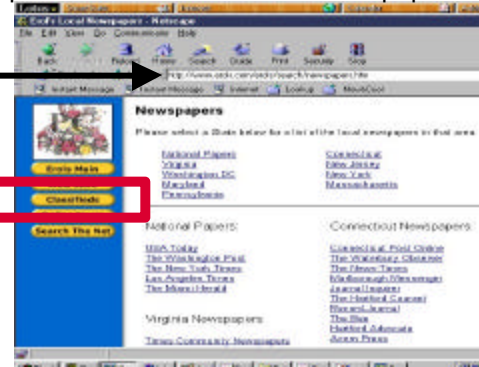


c. data distribution means for distributing data in the network such that **data** required for an application requested at a respective reception system **can be collected from the data store of the respective reception system** and to the extent required data is unavailable at the respective reception system, such that the required **data not at the respective reception system can be collected from the network other than the respective reception system** so that the requested application can be presented at the respective reception system based on the objects collected.

<http://www.erols.com/index.html>



<http://www.erols.com/search/newspapers.html>



Delete required object from Cache

[illegible]

Required object
collected from
EROLS Server

~~<http://www.erols.com/erols/news/index.html>~~
(Mvdj096u.htm)

