

UNITED STATES PATENT
5,796,967

to FILEPP ET AL.

Issued: August 18, 1998

Filed: November 26, 1993

Priority: July 15, 1988

**METHOD FOR PRESENTING
APPLICATIONS IN AN INTERACTIVE
SERVICE**

OVERVIEW:

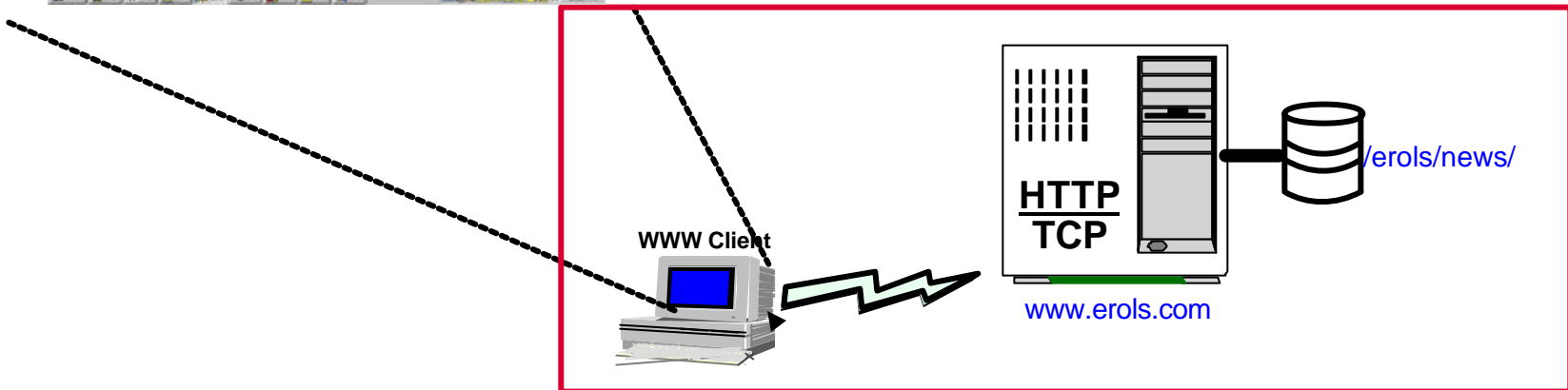
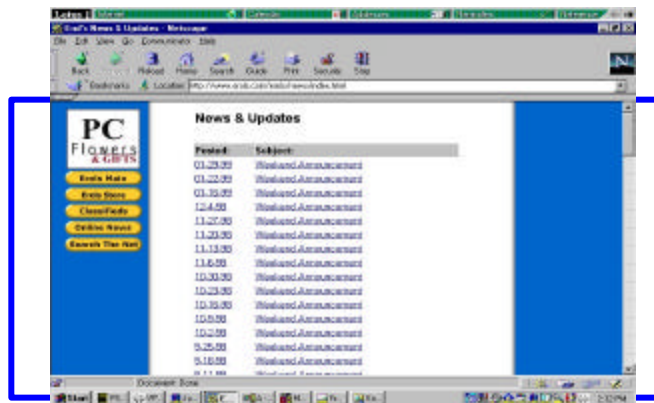
An ISP host network presents partitioned web pages at a user's system by distributing data files over the network. The first partition presents the web page, the second partition presents hyperlinks on the web page for moving to another web page.

Claim:

- 1. A method for presenting interactive applications on a computer network, the network including a multiplicity of user reception systems at which respective users may request a multiplicity of available applications, the respective reception systems including a monitor at which applications requested can be presented as one or more screens of display, the method comprising the steps of:**
 - a. generating a screen display at a respective reception system for a requested application, the screen display being generated by the respective reception system from data objects having a prescribed data structure, at least some of which objects may be stored at the respective reception system, the screen display including a plurality of partitions, the partitions being constructed from objects, the objects being retrieved from the objects stored at the respective reception system, or if unavailable from the objects stored at the respective reception system, then from the network, such that at least some of the objects may be used in more than one application;**
 - b. generating at least a first partition for presenting applications; and**
 - c. generating concurrently with the first partition at least a second partition for presenting a plurality of command functions, the command functions including at least a first group which are selectable to permit movement between applications.**

1. A method for presenting interactive applications on a **computer network**, the network including a multiplicity of user reception systems at which respective users may request a multiplicity of available **applications**, the respective reception systems including a monitor at which applications requested can be presented as one or more screens of display, the method comprising the steps of:

<http://www.erols.com/erols/news/index.html>

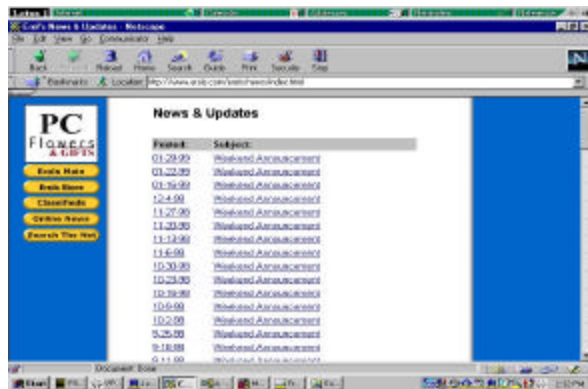


Partitioned Applications re 5,976,967:

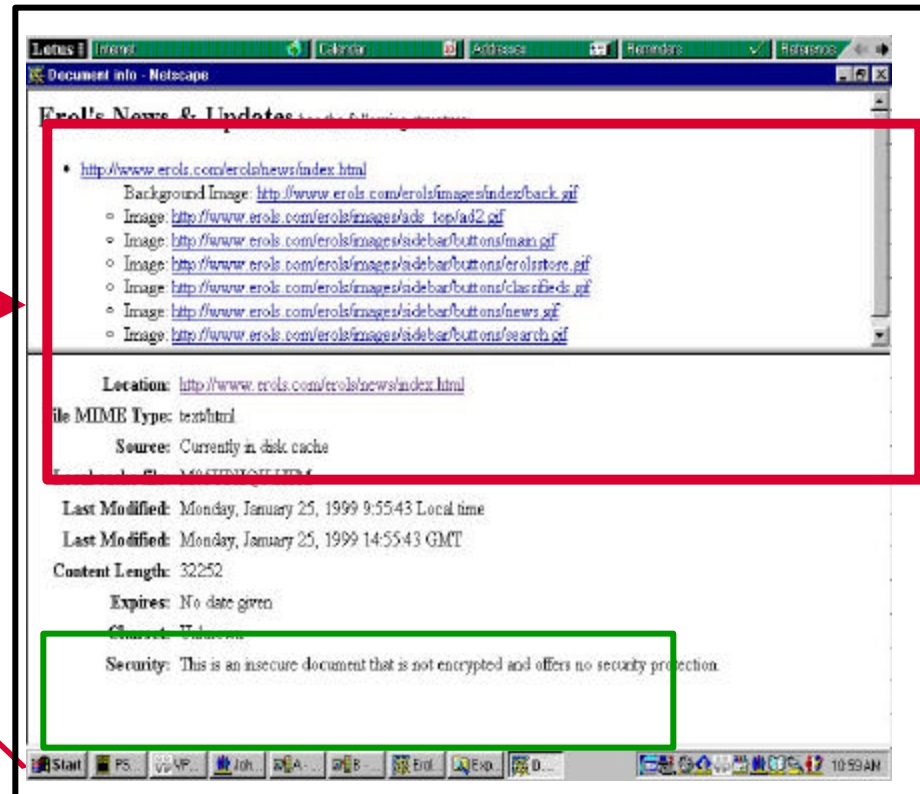
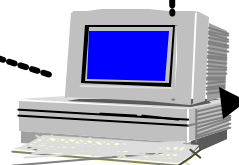
Col5 "Applications... are available from higher elements of network ... and are retrieved on demand...for interpretive execution. Thus, not all partitions of a partitioned application need be resident... to process a selected partition,..." "Each application partition is an independent, self contained unit and can operate correctly by itself.

a. generating a screen display at a respective reception system for a requested application, the screen display being generated by the respective reception system from **data objects having a prescribed data structure**, at least some of which objects may be **stored at the respective reception system**, the screen display including a plurality of partitions, the partitions being constructed from objects, the objects being retrieved from the objects stored at the respective reception system, or if unavailable from the objects stored at the respective reception system, then from the network, such that at least some of the objects may be used in more than one application;

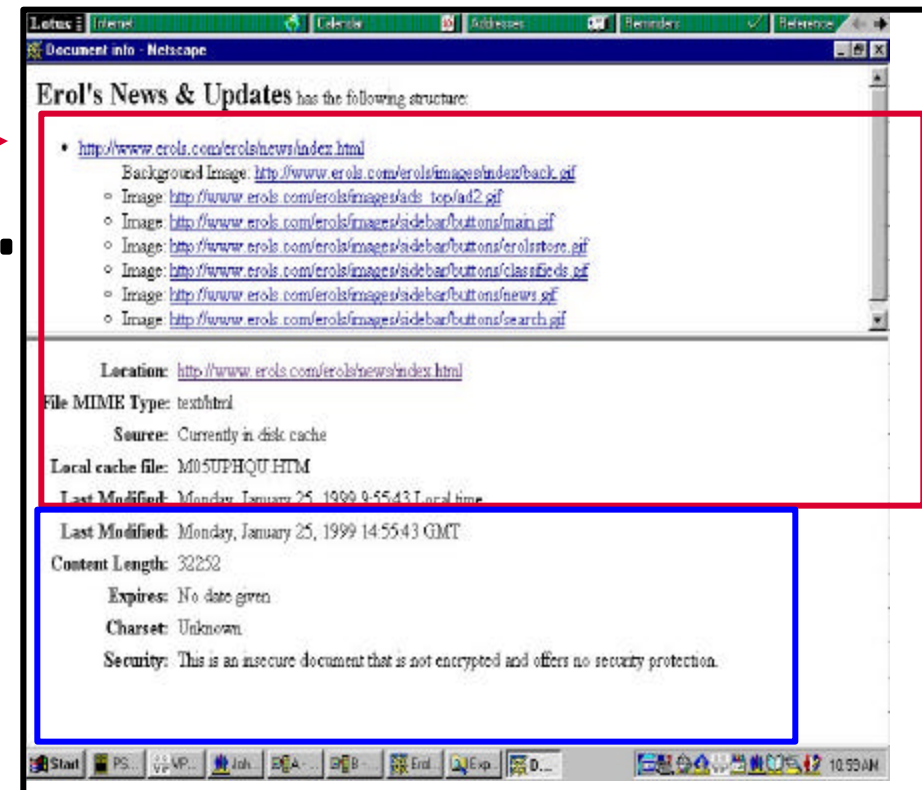
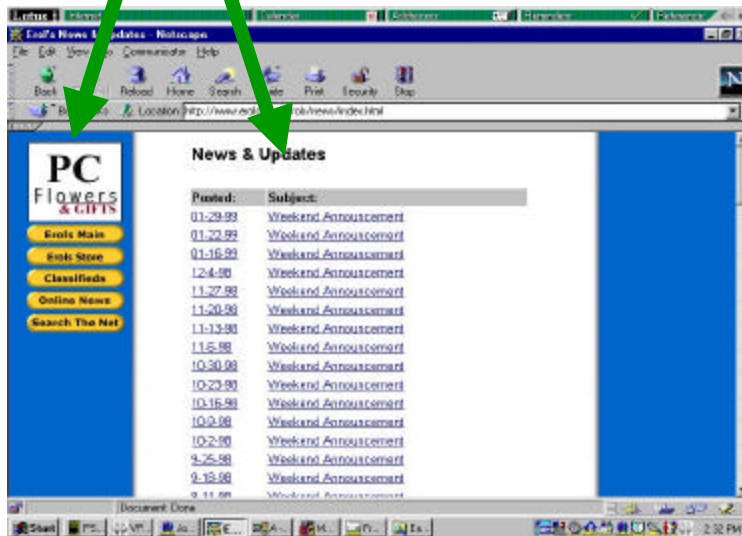
<http://www.erols.com/erols/news/index.html>



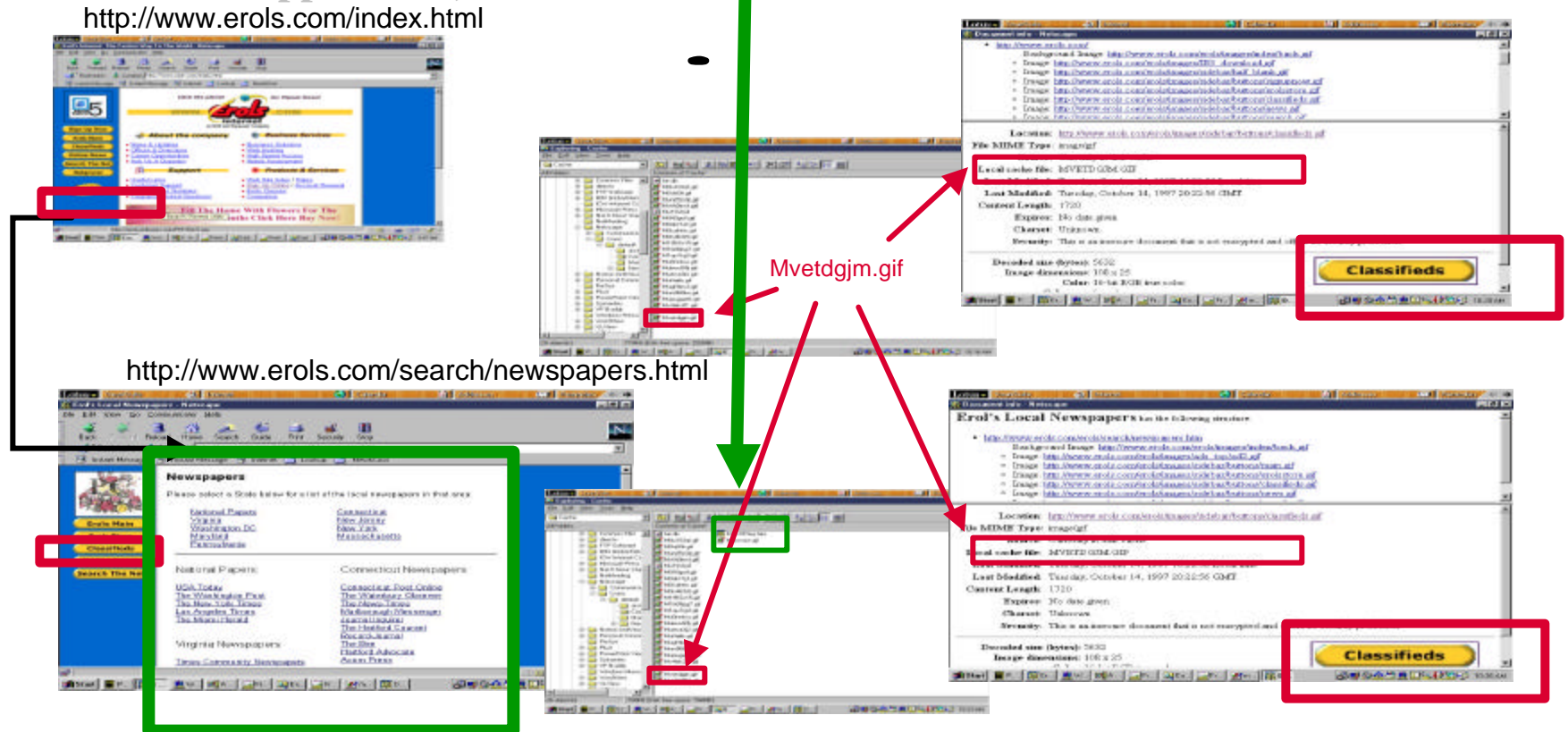
WWW Client



a. generating a screen display at a respective reception system for a requested application, the screen display being generated by the respective reception system from data objects having a prescribed data structure, at least some of which objects may be stored at the respective reception system, the screen display including a **plurality of partitions**, the **partitions being constructed from objects**, the **objects being retrieved from the objects stored at the respective reception system**, or if unavailable from the objects stored at the respective reception system, then from the network, such that at least some of the objects may be used in more than one application;

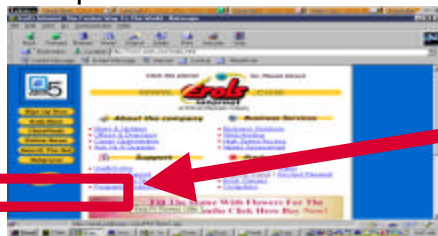


a. generating a screen display at a respective reception system for a requested application, the screen display being generated by the respective reception system from data objects having a prescribed data structure, at least some of which objects may be stored at the respective reception system, the screen display including a plurality of partitions, the partitions being constructed from objects, the objects being retrieved from **the objects stored at the respective reception system**, or if unavailable from the objects stored at the respective reception system, then from the network, such that at least some of the objects may be used in more than one application;

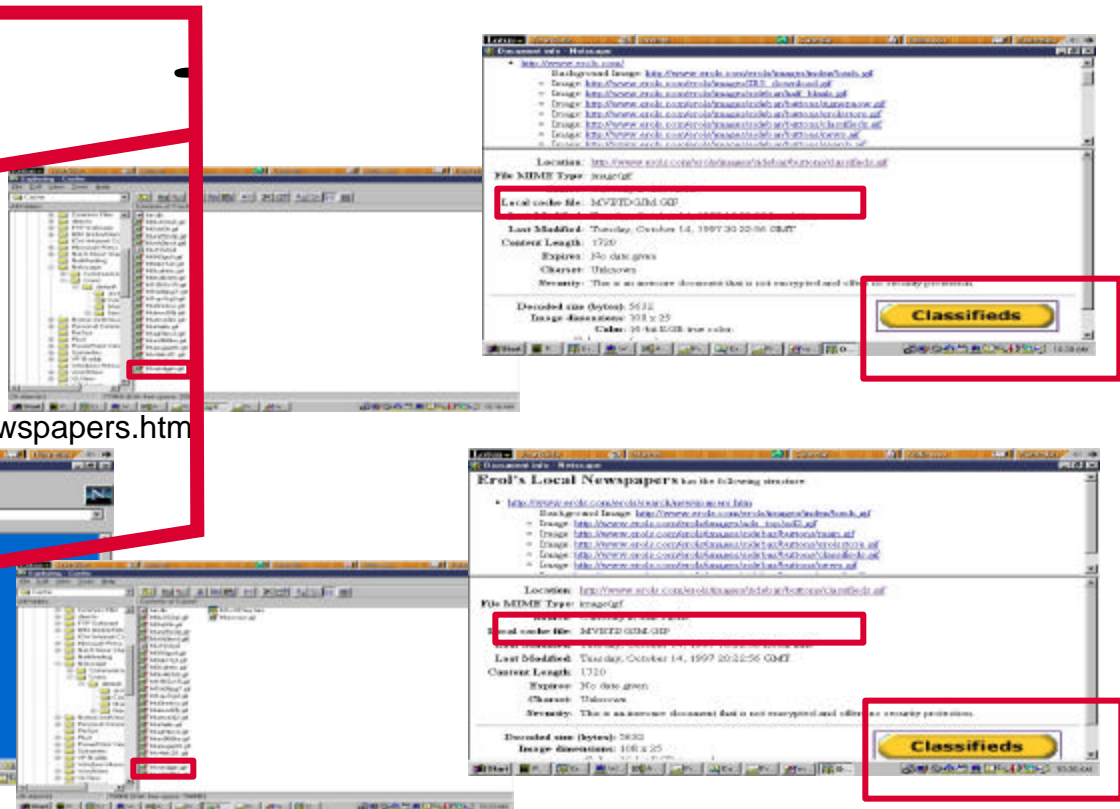
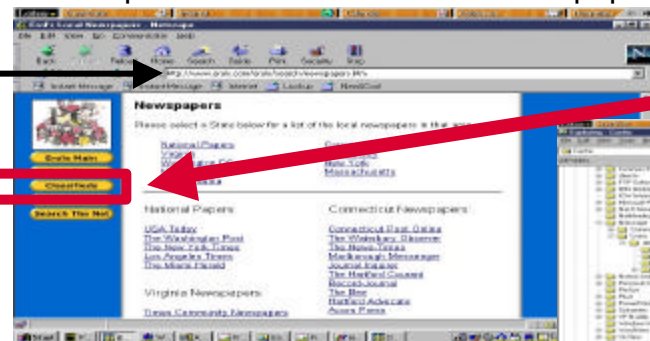


a. generating a screen display at a respective reception system for a requested application, the screen display being generated by the respective reception system from data objects having a prescribed data structure, at least some of which objects may be stored at the respective reception system, the screen display including a plurality of partitions, the partitions being constructed from objects, the objects being retrieved from the objects stored at the respective reception system, or if unavailable from the objects stored at the respective reception system, then from the network, such that at least **some of the objects may be used in more than one application;**

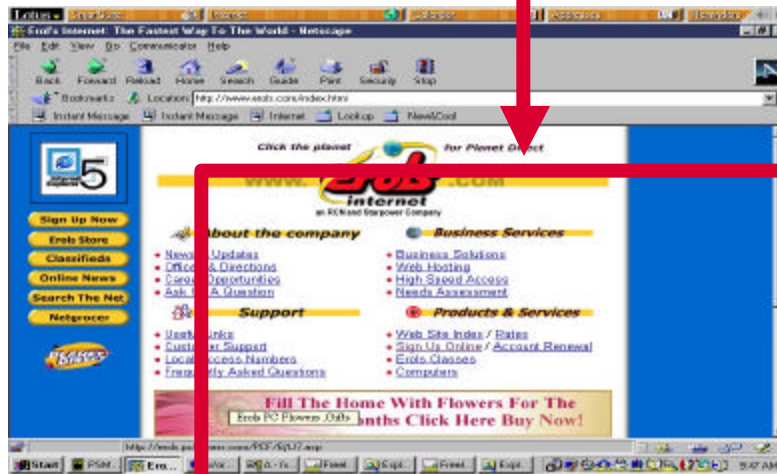
<http://www.erols.com/index.html>



<http://www.erols.com/search/newspapers.htm>



b. generating at least a **first partition** for presenting applications; and



c. generating concurrently with the **first partition** at least a **second partition** for presenting a **plurality of command functions**, the command functions including at least a first group **which are selectable to permit movement between applications.**

