

# EXHIBIT B

Zillow Valuation



27 Race Ln

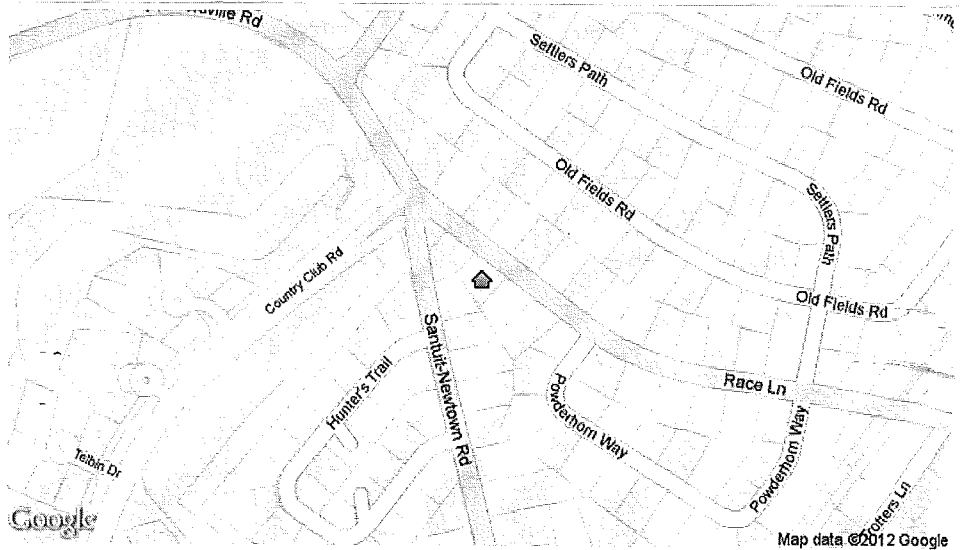
**Zestimate** \$237,500

Rent Zestimate: \$1,475/mo  
Est. Mortgage: \$879

<b>Beds:</b>	3
<b>Baths:</b>	2
<b>Sqft:</b>	1,248
<b>Lot:</b>	21,780 sq ft / 0.50 acres
<b>Type:</b>	Single Family
<b>Year built:</b>	1978
<b>Last sold:</b>	May 10 2002 for \$245,000
<b>Parking:</b>	--
<b>Cooling:</b>	--
<b>Heating:</b>	
<b>Fireplace:</b>	--
<b>County:</b>	Barnstable
<b>Exterior material:</b>	Wood
<b>Parcel #:</b>	M:0014 B:0135
<b>Per floor sqft:</b>	1,248
<b>Roof type:</b>	Asphalt
<b>Total rooms:</b>	5
<b># Stories:</b>	1
<b>Unit cnt:</b>	1
<b>Zillow Home ID:</b>	55918486

This 1248 square foot single family home has 3 bedrooms and 2.0 bathrooms. It is located at 27 Race Ln Sandwich, Massachusetts. The nearest schools are Oak Ridge, Barnstable Horace Mann Charter School and Sandwich High School.

**Map**



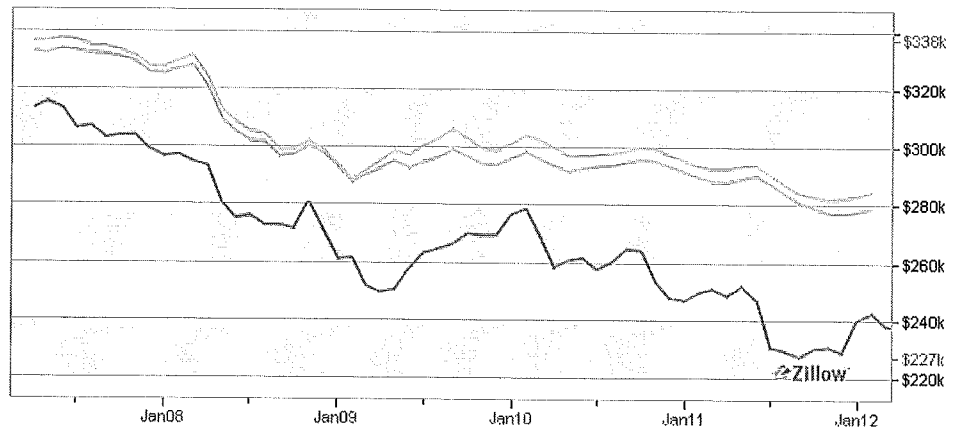
**Charts and Data**

**Nearby schools**

- Primary:** Oak Ridge
- Middle:** Barnstable Horace Mann Charter School
- High:** Sandwich High School

**Take Zillow on the go!** Get free Zillow apps for the iPhone, iPad, and Android.

	Value	Range	30-day change	\$/sqft	Last updated
<b>Zestimate</b>	\$237,500	\$178K - \$259K	-\$3,400	\$190	03/12/2012
<b>Rent Zestimate</b>	\$1,475/mo	\$1.2K - \$1.8K/mo	+\$25	\$1.18	03/05/2012



**Price History**

Date	Description	Price	% Chg	\$/sqft	Source
05/10/2002	Sold	\$245,000	--	\$196	Public Record

**Tax History**

Year	Property taxes	% Change	Tax assessment	% Change
2011	\$3,069	3.9%	\$252,000	-4.1%